

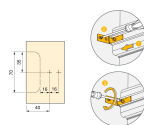
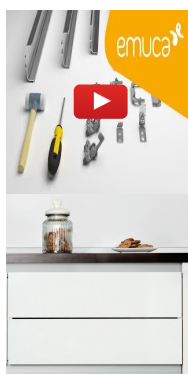


**Central profile Gola kit for kitchen furniture,
White painted, Aluminium**

8160112

Product features

- Central flange profile kits for module fronts.
- The kit includes all the necessary accessories for assembly.
- The code consists of 2 central Gola profiles, 2 sets of side covers and 12 brackets with expansion screw.
- The central Gola profile is supplied at a size of 2,350 mm to be cut to the desired size.
- Made of aluminum with white painted finish.



Product Information

SKU	8160112
Materials	Aluminium
Finishings	White painted
Packaging	1 KIT
Components	2 Gola profiles 2.350 mm, 2 sets of side covers and 12 brackets with expansion screw.

Gola profile kits for handle-less module fronts. It's composed of all the necessary accessories for assembly, consisting of 2 Gola profiles of 2,350 mm, 2 sets of covers and 12 brackets with expansion screws.

Gola profiles, together with their accessories, optimize module interiors without losing linearity, following an avant-garde aesthetic.

One of the greatest advantages of Gola profiles lies in their **ease of assembly** thanks to their fixing bracket with expansion screw, which simplifies the machining of the panel, **thus saving effort and time during installation.**

The Gola kit is made of aluminum and is available in white, black and matte anodized finishes.

The visible faces of the profiles are protected by a protective film to prevent possible friction and damage.

Components

2 Gola profiles 2.350 mm, 2 sets of side covers and 12 brackets with expansion screw.

Documentation

